

Reducing Installation Time and Costs with Next-Gen Solar Mounting



The Smart Ground Mounting Solution for Utility and Commercial Solar Projects

Discover how SolarTerrace Ikon simplifies installation, cuts costs, and adapts to complex terrains – accelerating the deployment of solar energy worldwide

In the rapidly growing field of renewable energy, the need for innovative, cost-effective, and efficient solar mounting solution is paramount. SolarTerrace Ikon by sjsolarhub, part of the PVEzRack line, is designed to address these challenges. This whitepaper outlines the unique features, benefits, and applications of SolarTerrace Ikon, highlighting its role in reducing costs, simplifying installation, and supporting sustainable energy transition efforts.

New Arrival

SolarTerrace Ikon

Effortless and Installation-friendly
Ground PV Mounting Solution



The Next Generation of Ground Mount Solution, SolarTerrace Ikon

As global demand for solar energy continues to rise, the efficiency of solar installations becomes a key differentiator. Ground-mounted solar systems, particularly for commercial and utility-scale projects, face challenges such as high labour costs, complex site conditions and the need for long-term reliability. SolarTerrace Ikon has been developed to tackle these issues, providing an adaptable, easy-to-install system that reduces both upfront and operational costs while ensuring safety and durability.

Key Features and Innovations

Optimised Design for Enhanced Flexibility:

The SolarTerrace Ikon system is designed for versatility across diverse site conditions. Its innovative crossbeam and adjustable holes accommodate various module tilt angles, enabling faster logistics and streamlined on-site handling.



Excellent Terrain Adaptability

Single-Technician Installation:

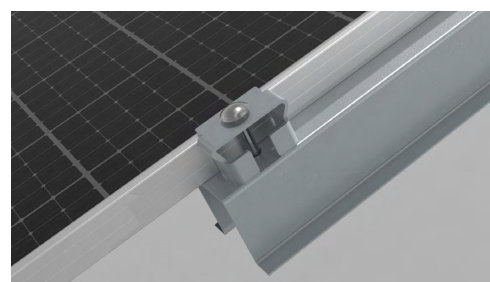
One of SolarTerrace Ikon's standout features is its single-technician installation capability. This is made possible through an innovative module positioning shim that simplifies alignment and reduces the need for specialized skills and tools. This feature significantly lowers labour costs and reduces installation time, making it particularly beneficial in regions with high labour expenses.



Rapid Panel Positioning

Quick and Secure Assembly:

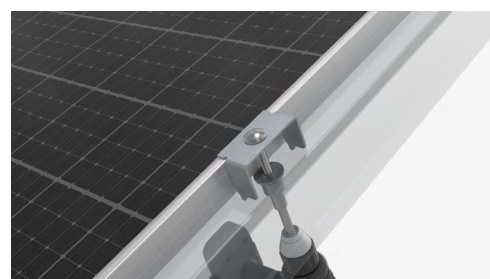
The system incorporates a proprietary swift-clamp mechanism ensuring secure installation with minimal components, further enhancing the speed and simplicity of the process. Additionally, the clamps feature a built-in grounding function, eliminating the need for additional grounding parts and enhancing overall safety during the installation.



Built-in Grounding Clamp

Durability and Reliability:

Designed for long-term performance, the SolarTerrace Ikon system has undergone rigorous structural and environmental testing to ensure durability across various climatic conditions. Its high-quality materials minimize maintenance costs, while the back-locking panel feature enhances safety during the installation process, reducing on-site accidents.



Back-locking Panel

Applications:

SolarTerrace Ikon is particularly well-suited for:

Utility-scale solar installations: its scalability and cost-effectiveness make it ideal for large projects that require minimal on-site labour.

Commercial solar projects: Businesses looking to reduce costs and carbon footprint benefit from SolarTerrace Ikon's quick installation and low-maintenance design.

Challenging terrains: thanks to its adaptive structure, SolarTerrace Ikon is ideal for uneven or sloped land, minimizing the need for extensive grading. sjsolarhub also provides full grading and ramming studies to support installations in complex locations.



Certifications & Structural Validation

The SolarTerrace Ikon system meets global quality and safety standards, having achieved:



ISO9001 certification for quality management



CE and TUV certifications for compliance with European and international safety standards.



Wind tunnels testing validation, ensuring reliable structural performance under diverse climatic conditions.

Cost & Efficiency: Reducing LCOE

A central advantage of SolarTerrace Ikon is its contribution to reducing the Levelized Cost Of Energy (LCOE). This is achieved through:

- Lower upfront capital expenditures (CAPEX) by minimizing material waste and labour cost
- Faster installation leading to reduce project timelines
- Lower operational expenses (OPEX) due to minimal maintenance requirements
- Enhanced durability, ensuring stable energy production over the project's lifetime

Conclusion

Sjsolarhub's SolarTerrace Ikon provides a robust, cost-effective solution to meet the increasing demands of the solar energy sector. Its innovative design, ease of installation, and focus on long-term reliability make it an optimal choice for utility and commercial solar projects. By streamlining installation and reducing operational costs, SolarTerrace Ikon contributes to sustainable energy deployment while lowering the overall carbon footprint during both construction and O&M phases

